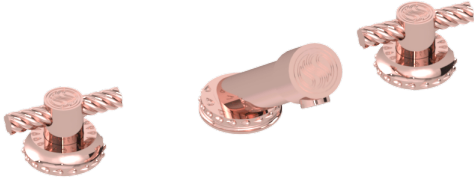




## Eternity Classic Duo Signature Deck Mount Faucet Set

**B-ET-102C-00**



Immerse yourself in the epitome of luxury living with the Eternity Classic Duo Signature Deck Mount Faucet Set from Susan Dunn. Meticulously crafted to embody timeless elegance and superior craftsmanship, this exquisite fixture elevates any space with its impeccable design and attention to detail. Feel the tranquil cascade of water as it gracefully flows from the duo signature spouts, creating a sensory experience that epitomizes pure indulgence. With its sleek lines, flawless finish, and signature design, every detail of this faucet set reflects the passion and dedication synonymous with the Susan Dunn brand. Elevate your home with the essence of refined living and immerse yourself in the art of luxury with the Eternity Classic Duo Signature Deck Mount Faucet Set.

- Solid brass construction for durability and reliability.
- Includes drain assembly.
- 20pt 1/4 turn ceramic disc valve cartridge.
- Standard aerator limited to 1.2 GPM.
- Certified to meet or exceed the following codes and standards: ASME A112.18.1/CSAB 125.1-2012